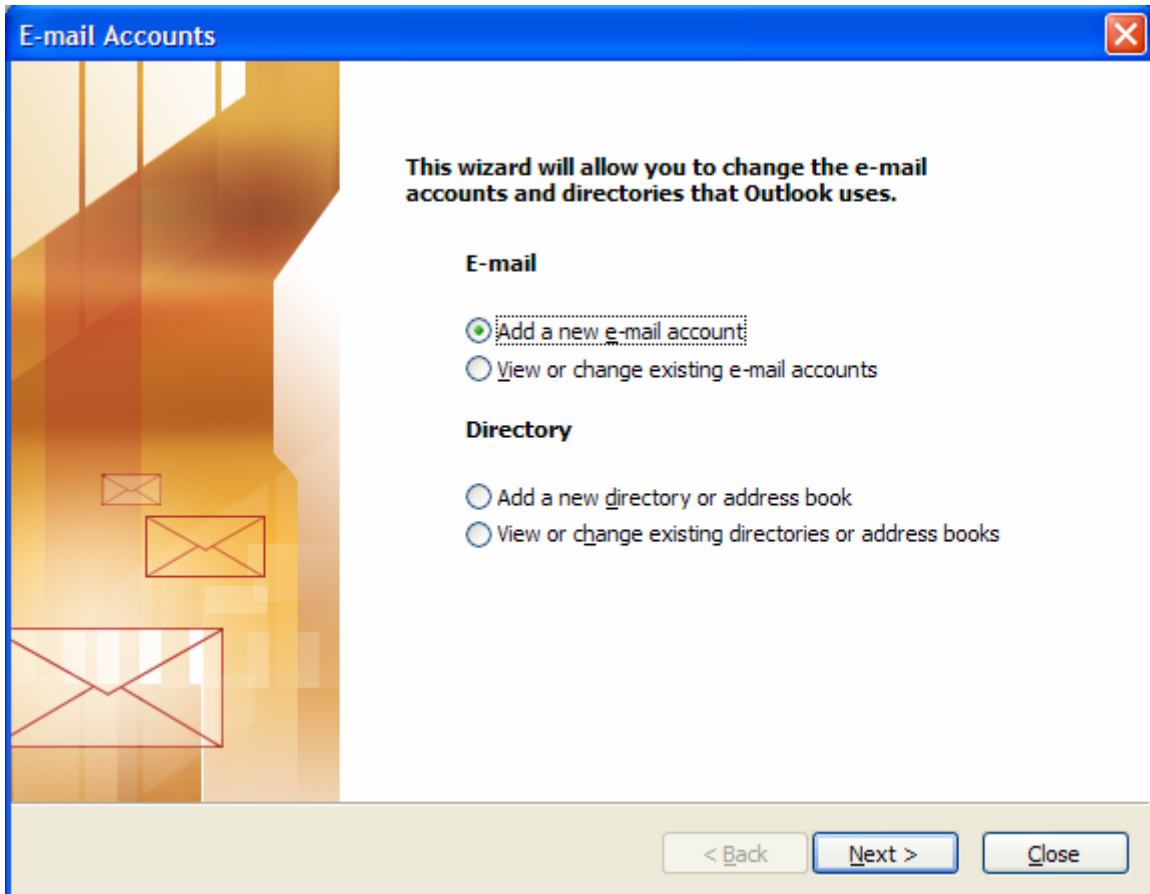
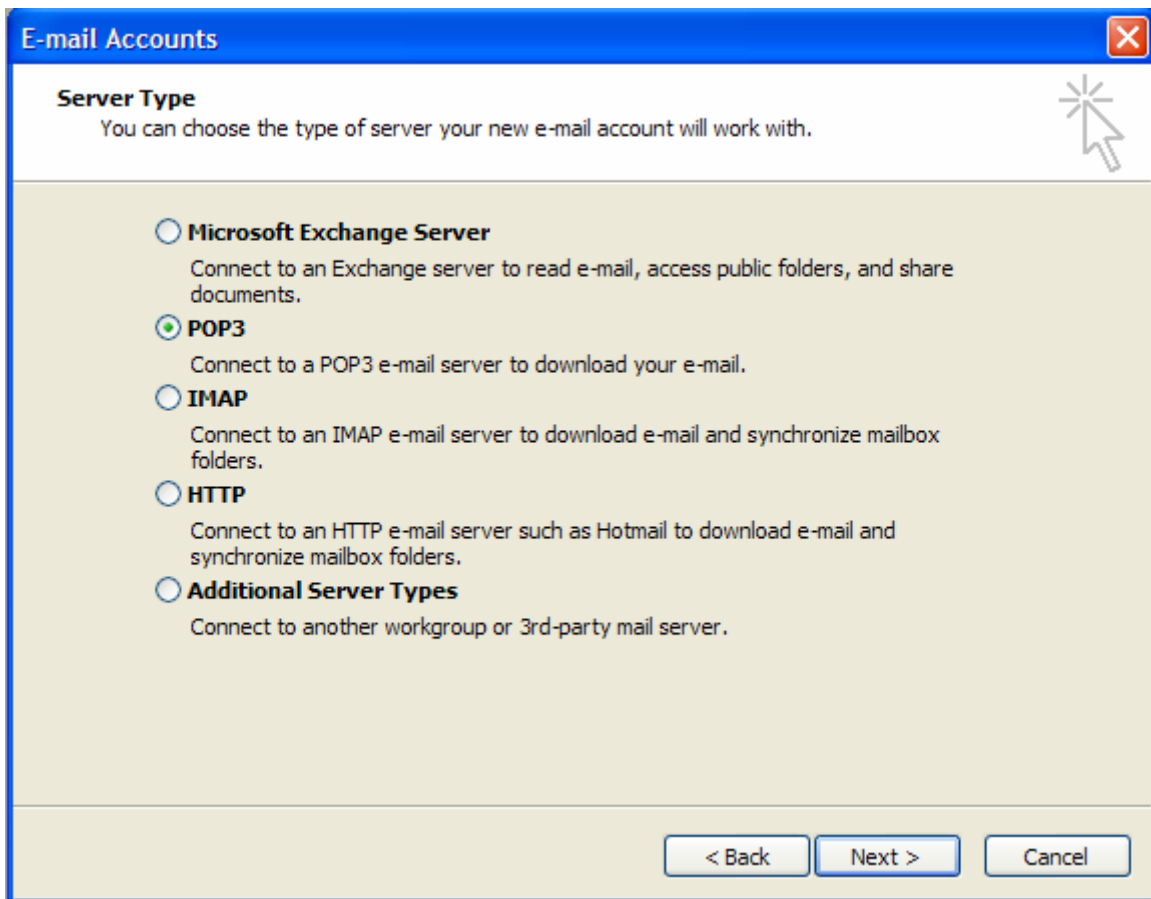


## Setting up POP3 connection for Advanced Business Group Webmail

Go to the settings of your email client, for this example I will be using Outlook 2003 which can be configured through the Mail icon under the Control Panel.



1. Select "Add a new e-mail account" and select the next button at the bottom.



2. Select POP3 for the server type and then select "Next" at the bottom.

**E-mail Accounts** [X]

**Internet E-mail Settings (POP3)**  
Each of these settings are required to get your e-mail account working.

**User Information**

Your Name:

E-mail Address:

**Server Information**

Incoming mail server (POP3):

Outgoing mail server (SMTP):

**Logon Information**

User Name:

Password:

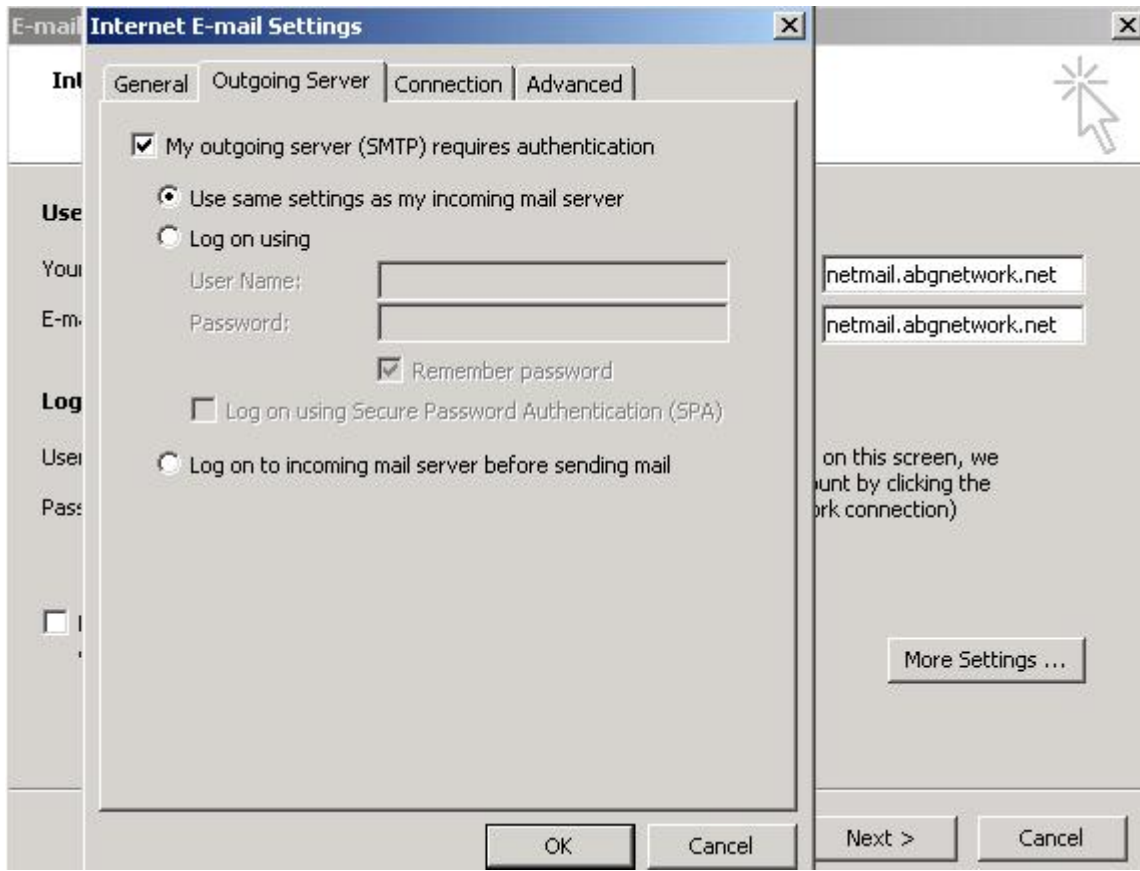
Remember password

Log on using Secure Password Authentication (SPA)

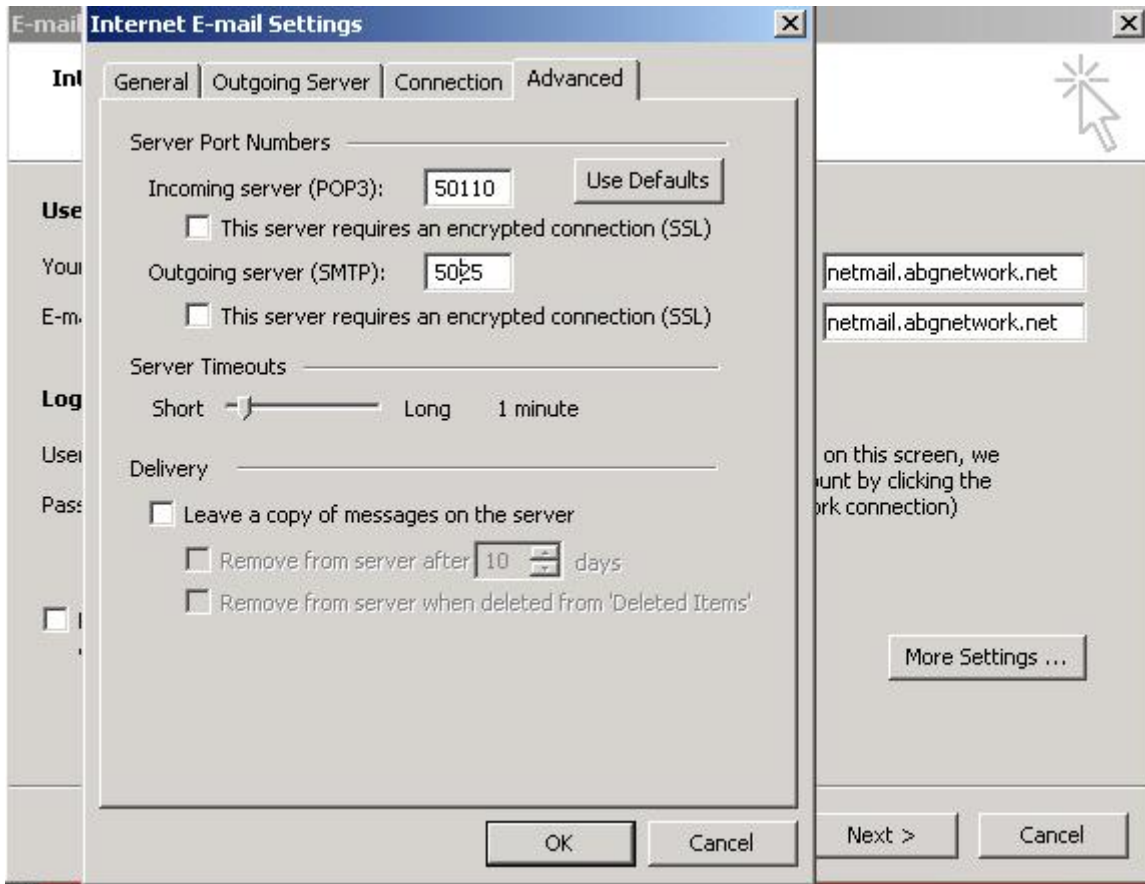
**Test Settings**

After filling out the information on this screen, we recommend you test your account by clicking the button below. (Requires network connection)

3. Fill in all of the fields as shown above, replacing the generic “Your Name” and “[email@yourdomain.com](mailto:email@yourdomain.com)” with your valid email information and password. Select the “More Settings ...” button toward the bottom right of the screen.

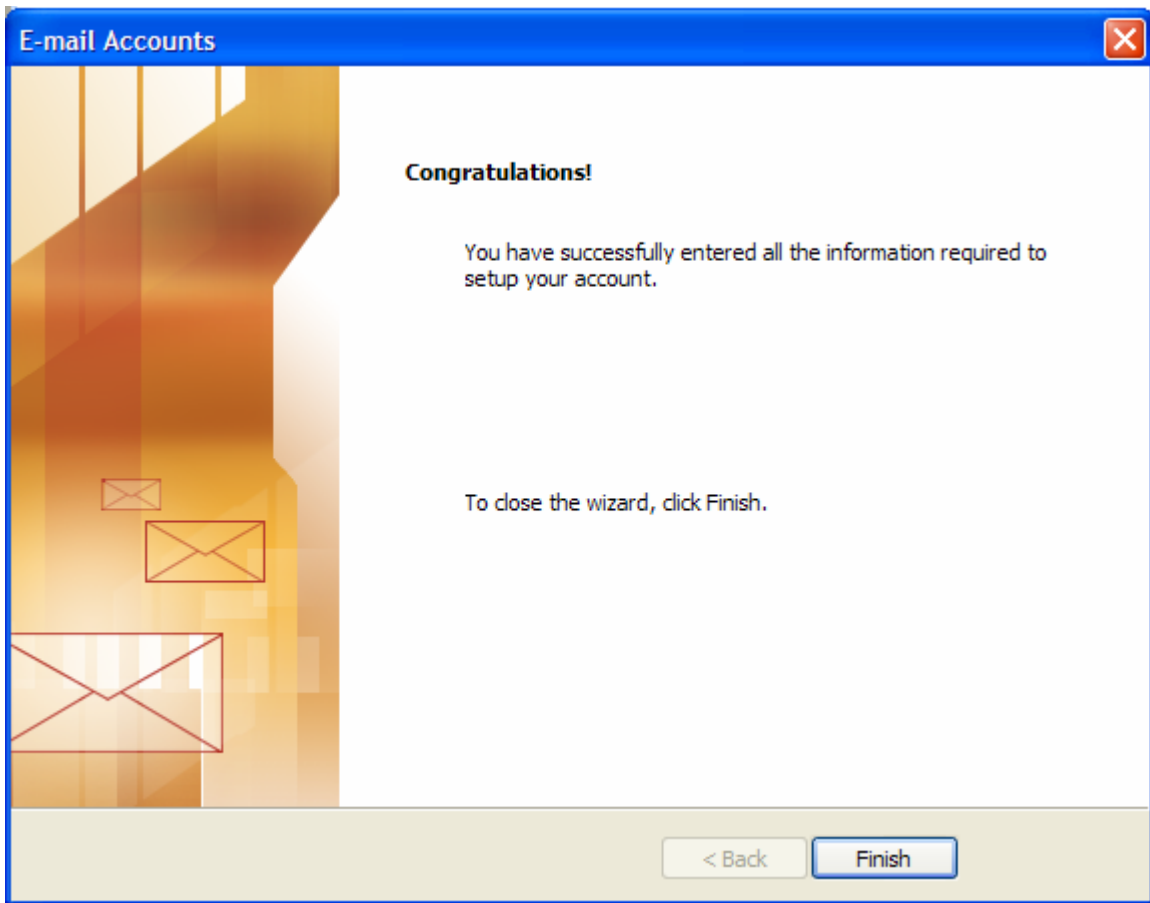


4. Select the “Outgoing Server” tab of this windows and place a check in the box for “My outgoing server (SMTP) requires authentication” make sure that the bullet is in the selection for “Use same settings as my incoming mail server. Then select the “Advanced” tab.



5. On this tab change the POP3 and SMTP ports from their default value of 110 and 25 to 50110 and 5025. Once they are changed, select “OK” at the bottom.

If these values are not changed, you will not be able to connect to the mail server. This is done for several reasons. The first reason is to limit the amount of spam being sent to the mail server and the second reason is to allow you to connect to the mail server from ISPs that are blocking connections to mail servers other than the ISPs mail servers.



6. Select "Finish" and your email account is configured.